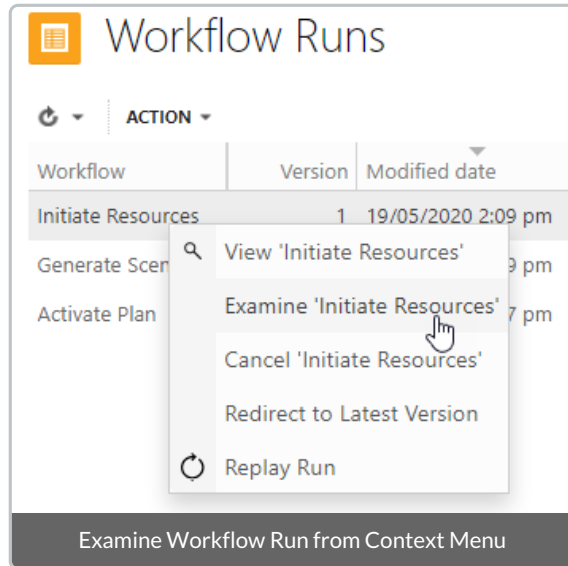


Examining Workflow Runs

Last Modified on 25/05/2020 11:59 am AEST

Examining Workflow Runs

Examine Workflow Run assists Tenant Administrators in troubleshooting or fine tuning workflow execution. The **Examine** option is available via the Right Click context menu, or via selecting the Workflow Run record and selecting **Examine** from the Action list.



This will show summary page with details that may be toggled on (blue) or off (gray). The number of tabs shown depends on what activities are in the workflow, as well as the state of the workflow; for example, if there are no *Variables* in the Workflow, then the *Variables* tab will not be present.

Below is an example page of **Examine Workflow Run** on a failed Workflow.

Workflow: Set Gap (1930652) State: Failed

Triggering run: Duplicate Function (2043351)
Trigger: Recalculate Gap (1937291)
Triggering entity: Contact Centre Specialist (2084542)
Started at: 2020-05-19 14:57:02.757 +1000
Completed at: 2020-05-19 14:57:07.753 +1000
Last updated: 2020-05-19 14:57:07.833 +1000
Duration (ms): 163
Correlation code: S04844-P08539:report:1921536-Z894389-191455
Error Log: Workflow run internal error (2044613)

InputsVariablesSteps takenTime in activitiesActivity outputs

Showing: Activity outputs, Inputs, Steps taken, Time in activities, Variables

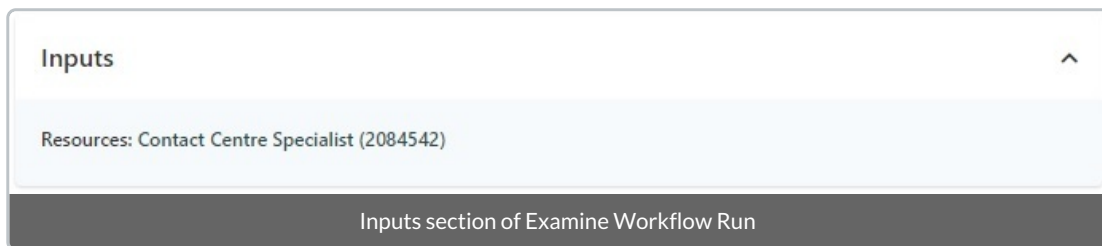
The Examine Workflow Run Summary Page

State information

There are up to six potential information tabs that will be available in the Examine page. At the bare minimum, *Steps Taken* and *Time in Activities* will always be available.

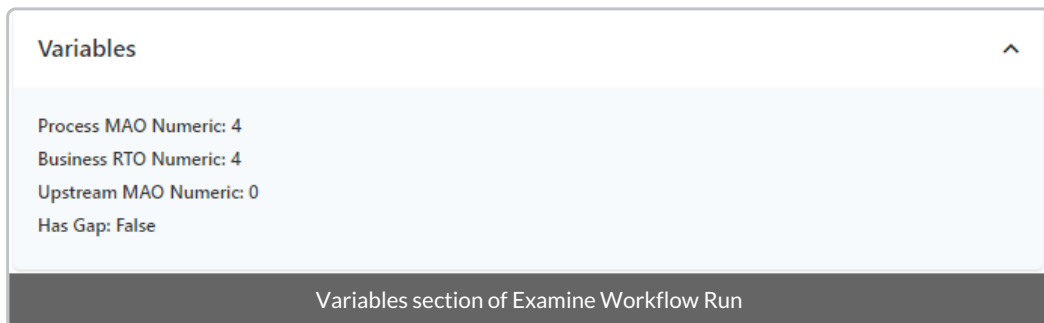
1. Inputs
2. Variables
3. Steps Taken
4. Time in Activities
5. Activity Outputs
6. Child Runs

Inputs



This is the input parameter(s) to the workflow, which links to the object(s) view form. Tenant Administrators may check here to verify that the expected Input is being passed into the Workflow - should this be unexpected, the flow must be traced upstream to determine why.

Variables



The current state of *Variable* values are shown in this section. If the Workflow run has produced some unexpected results, knowing what the Variable values are will assist in correctly tracing through the execution path.

Steps taken

Steps taken				
Timestamp	Step	Activity	Evaluate inputs (ms)	Run (ms)
2020-05-19 14:57:07.583 +1000	1	Gateway1	0	0
2020-05-19 14:57:07.583 +1000	2	Is a People Resource with Key Person Risk	0	0
2020-05-19 14:57:07.614 +1000	3	Update	0	28
2020-05-19 14:57:07.630 +1000	4	Gateway	1	1

Steps Taken section of Examine Workflow Run

This is the ordered sequence of activities (limited to the last 200). This information is used to determine the exact path this Workflow Run is or has taken to assist in troubleshooting a Workflow Run, such as:

1. Walking through the Workflow to check that given the understood *Inputs, Variables* and expected state of fields on which Workflow Calculations are dependent that the Workflow is following the intended path
2. Using the Timestamp to interleave the execution history of Activities across multiple concurrently running Workflows. This is of significant importance where changes effected by one Workflow may impact other running Workflows. For example, Workflow A makes a change to a field value on Record X, and Workflow B using using that value from Record X as an evaluator in a Gateway Activity.
3. The Run (ms) metric will assist in identifying performance bottlenecks at the individual Step level. Conversely, the *Time in Activities* tab provides aggregated time metrics.

Time in Activities

Time in activities				
Activity	Count	Evaluate inputs (ms)	Run (ms)	Total time (ms)
User Message	1	8	70	78
Update Business	1	0	35	35
Update	1	0	28	28
Assign Bus	1	1	1	2
Gateway	1	1	1	2

Time in Activities section of Examine Workflow Run

Summary activity information is shown here in milliseconds, divided into preparation time - *Evaluate inputs(ms)* and running time - *Total time (ms)*. This information is useful when Tenant Administrators are seeking to optimise the run time of Workflows by providing direction as to where the most time is being spent by the Workflow Run under inspection.

By comparing the *Time in Activities* in several Workflow Runs of the same Workflow, Tenant Administrators may be able to infer additional information such as whether it has been degrading over time (which may be symptomatic of

growth of the volume of data the Workflow is interacting with), or if a particular Workflow Run is an outlier (Workflow Runs before and after are similar, but the one under inspection is significantly greater - which may be symptomatic of varying Platform load over the course of the day).

Activity outputs

Activity outputs

Create Link
URL: <https://us.readinow.com/sp/#/Dev/1968847/viewForm?formId=196514966>
Link:

For Each Asset
Record: (1951089)

Security Doc
Document: Security Report (1967571)

Risk Manager
Completed task: Property Works: Complete - BROWNS PLAINS (1967577)

Activities Outputs section of Examine Workflow Run

These are Entities that have been generated by the workflow, such URL Links, new Records, User Messages/Inputs, or Tasks from a [Launch Person Campaign](#) or [User Action](#) activity.

Check here to verify that the expected Outputs were created by the Workflow.

Child runs

Child runs

Start Assessment (1938893)

Child Runs section of Examine Workflow Run

This section lists Workflows that were initiated from the current workflow by a [Run Workflow](#) activity. Each Workflow Run in the list is a link to the Examine Workflow Run page for that specific Child Run.

Note that if any Child Workflow Run fails, the Parent Workflow Run will also be marked as failed.