

Release Notes 2.206 (18 September 2025)

Last Modified on 12/09/2025 10:53 am AEST

ReadiNow reserves the right to update these release notes at any time.

In this article:

- Features
 - Process Enhancements
 - Conditional actions buttons
 - Nova Feature Enhancements
 - Page Runner Enhancements
 - Page builder Enhancements
 - Platform Improvements
 - Encrypt and Decrypt Workflow activities
- Features in beta
 - AI Agent
 - AI Agent Updates
 - AI Agent Tools UI
 - Form panel
 - Key Highlights
- Bug Fixes
 - Process resolved issues
 - Nova resolved issues

Features

Process Enhancements

Conditional actions buttons

You can now configure **step-level conditions** in the **Process Builder** to control whether an action button (e.g., “Next”) defined within a **Display Page step** is enabled in the **Process Runner**.

- Add one or more **conditional expressions** to a process step.
- Action buttons remain **disabled until all conditions are met**.
- Configure **tooltip messages** to inform users why a button is disabled.

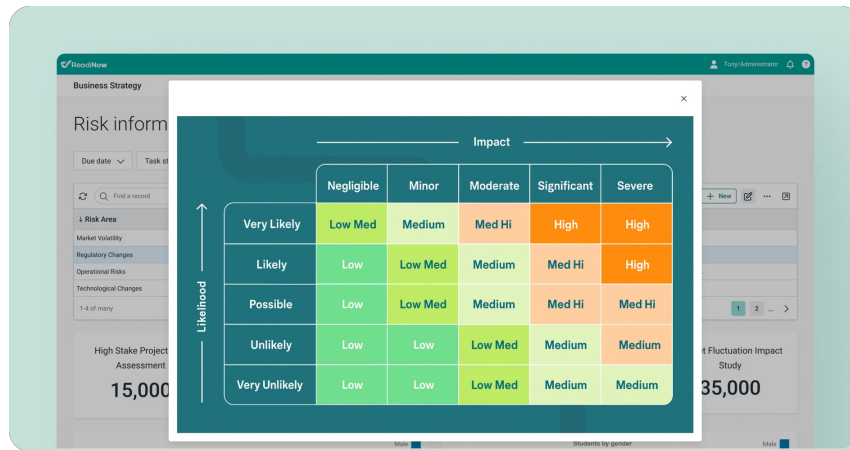
This feature allows designers to enforce process-specific logic before users can proceed, supporting flows where certain fields or relationships must be completed at each stage. See [Display Page Step](#) for more details.

Nova Feature Enhancements

Page Runner Enhancements

- **Click image to enlarge:** You can now click on images to view them in a larger, easy-to-read format. Perfect for

screenshots, guides, or to zoom-in on any detail requiring extra attention.



Page builder Enhancements

- Relationships using the “Hide in reverse” setting are now handled consistently in the Page Builder. These hidden relationship fields are automatically excluded from Adapter properties and the runner unless previously placed on the canvas, ensuring a clearer and more predictable form-building experience.

Platform Improvements

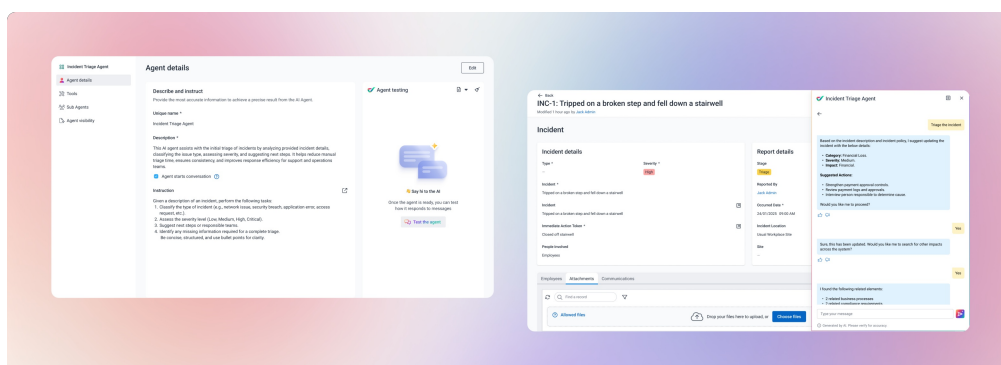
Encrypt and Decrypt Workflow activities

- Workflow activities supporting E2E file encryption:** Encrypt and decrypt workflow activities have been added as new workflow activities enabling E2E encryption of files between 3rd party platforms, file transfer servers and the ReadinessNow platform.

Features in beta

AI Agent

The ReadinessNow AI Agent capability is an exciting advancement in intelligent automation. It introduces a highly configurable and intuitive way to design and deploy AI-driven agents that can autonomously perform tasks and make decisions. The AI Agents feature entered the beta phase in **Release 2.202** and is available to customers participating in the [feedback program](#). To trial AI Agents, please submit a support ticket to request access.



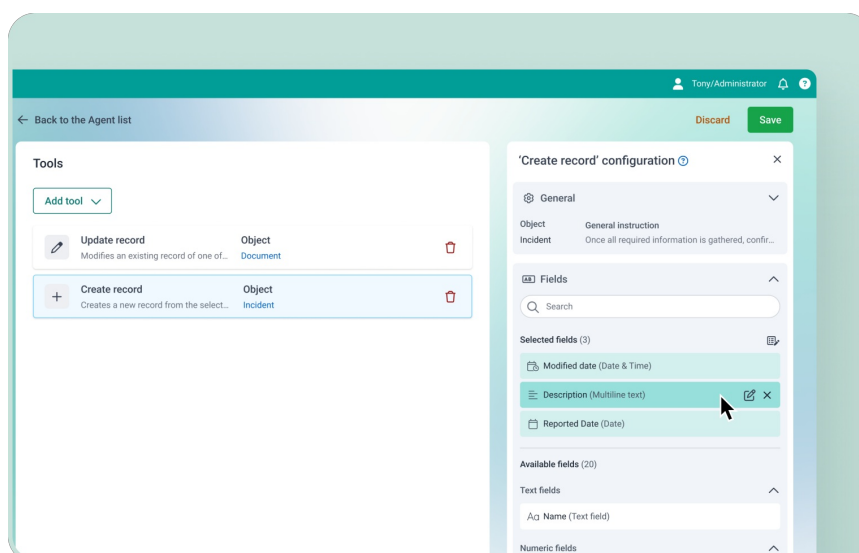
AI Agent Updates

AI Agent Tools UI

We're improving the usability of the **Create Record** and **Update Record** tools by redesigning the configuration panel. The configuration panel is now positioned on the **right-hand side** of the UI, providing a more intuitive and accessible layout.

Key highlights

- **Granular Instructions:** Field-level settings and instructions can now be defined, offering more granular agent settings.
- **Scoped Field Access:** administrators can now restrict which fields Agents can update or create.
- **User-Input Enforcement:** Introduced special field settings that enforce user input, ensuring data is manually entered and not pre-populated or agent-generated.



Form panel

We are introducing **Form Panel**, a new way to view and edit records while browsing records using the data table and without leaving the page. This feature enables users to efficiently edit records while browsing through data table rows, streamlining navigation and reducing context switching. The Form Panel feature entered beta phase in **Release 2.205** and is available to customers participating in the [feedback program](#). To trial the Form panel, please submit a support ticket to request access.

Key Highlights

- **Summary & preview experience** — view and edit a record's details side-by-side with the Data Table.
- **Extending Data table functionality** — supported in both Relationship Data Tables component and Data Table component.
- **Configurable by App Developers** — Form Panel is not enabled by default. Developers can nominate and configure specific Data Tables to use this feature.

please see further details [here](#)

Bug Fixes

Process resolved issues

- Secondary button style can now be selected for action buttons on a process step.

Nova resolved issues

- Workflow navigate activities that navigate to a Nova form will now show a breadcrumb, allowing better navigation after the activity is completed.
- Binding multiple reports to other reports on a Nova page should now work consistently.
- Fixed an issue where a nested tab container does not apply the correct visibility rules, resulting in the component being displayed rather than hidden.
- Fixed an issue causing a long delay when clicking discard on Nova forms.
- Multi-select on a data table will now behave more consistently and will exist upon navigation.
- Bound components will now correctly display data even after navigation.