

Release Notes for 2.137 (March 5th, 2020)

Last Modified on 03/03/2020 10:54 am AEDT

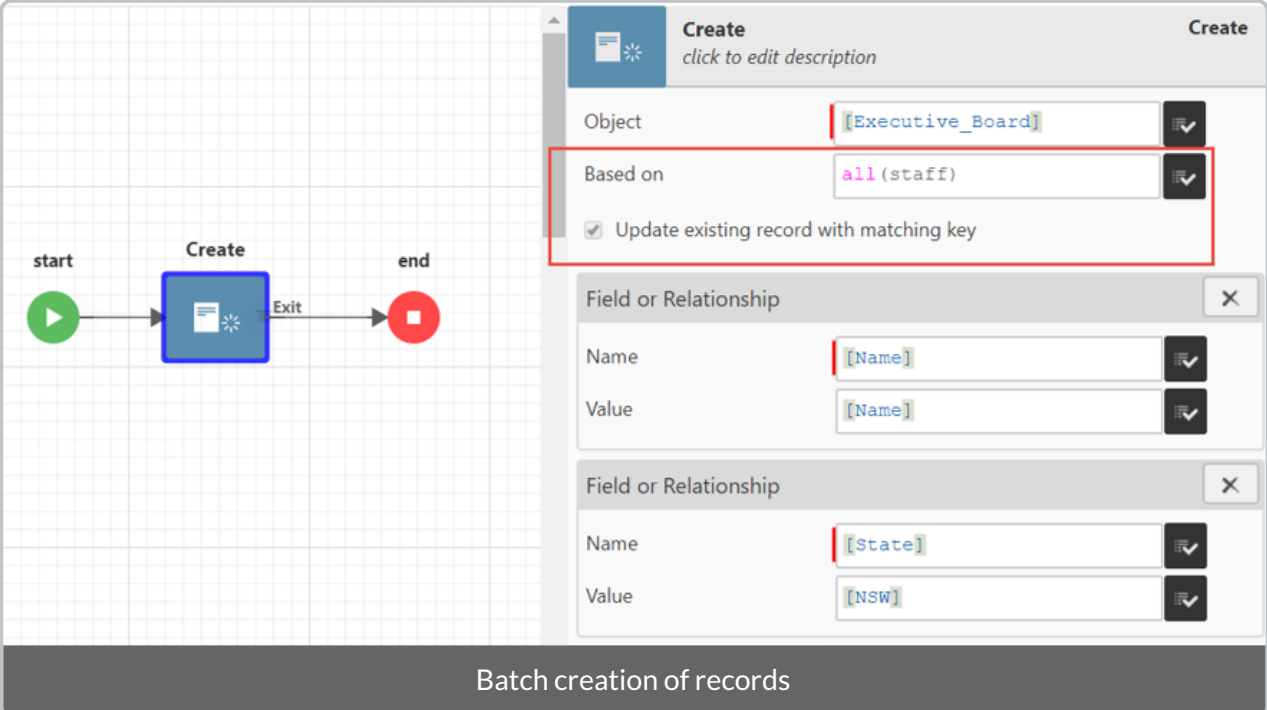
ReadiNow reserves the right to update these release notes at any time.

New Features

Workflow

Batch Creation of Records

This feature that allows users to create new record(s) based on another Object. Users will be able to create multiple records without looping which simplifies workflows which in turn should run faster.



The screenshot displays a workflow editor interface. On the left, a workflow diagram shows a 'start' node (green play button) connected to a 'Create' activity (blue square with a star icon), which is then connected to an 'end' node (red square). The 'Create' activity is highlighted with a blue border. On the right, the configuration panel for the 'Create' activity is shown. The panel has a title bar with 'Create' and 'click to edit description'. Below the title bar, there are several fields and options:

- Object:** A dropdown menu with the value '[Executive_Board]'.
- Based on:** A dropdown menu with the value 'all(staff)'. This field is highlighted with a red border.
- Update existing record with matching key
- Field or Relationship:** A section with a close button (X) containing two rows:
 - Name:** '[Name]'
 - Value:** '[Name]'
- Field or Relationship:** A section with a close button (X) containing two rows:
 - Name:** '[State]'
 - Value:** '[NSW]'

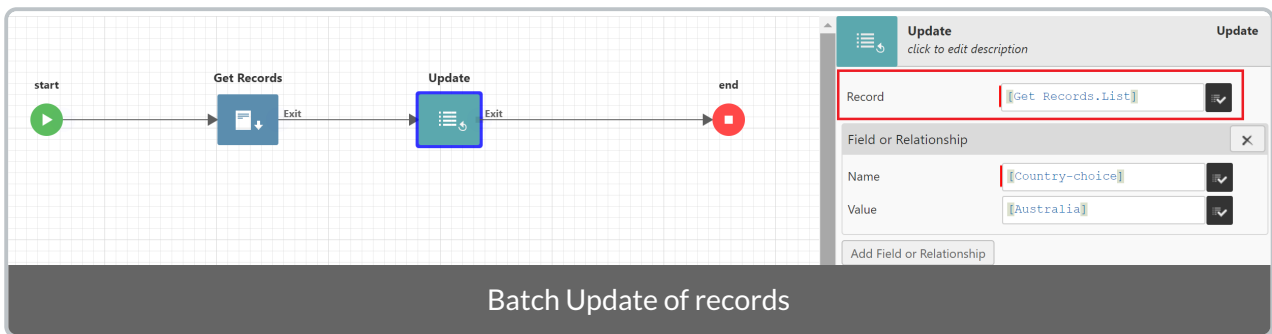
At the bottom of the configuration panel, the text 'Batch creation of records' is displayed.

Where there are existing records with a corresponding resource key available, this can be used to update the existing records by checking *Update existing record with matching key*.

Batch Update Activity

Historically, in order to update to multiple records in a workflow a loop was required.

In this release, the update activity is modified so that it will accept a list of records and perform the update on each record. This results in cleaner, more convenient workflows and improved performance.



"Template" style expressions in workflow calculations

New functions are available that allow document template techniques to be used within Workflow and Form calculations - *text* and *html*.

```
text(|Welcome {currentuser().[Account Holder]}, here is a custom greeting for you.|)
```

```
html ( |  
  
Dear {[First Name]},  
  
If your name contains angle brackets then you'll be OK.  
  
| )
```

Both functions allow you to easily create multi-line messages with customized content. **Document template** features such as repeated content and conditionally included content are supported.

The *html* function also includes security features to prevent unusual characters or malicious record data from producing unsafe HTML, and it should be used in any place that a Workflow needs to generate rich text.

Please refer to [Text Templates](#) for further details.

Calculations

Link Calculation Function

A new [link](#) calculation function has been provided that can conveniently generate a web address for a viewing/editing/creating a record, or to a ReadNow page. For example:

```
link(view, [A workflow record variable])  
link(create, [Task])  
link(report, [My Report Name])
```

Refer to the [Link function](#) for details.

Calculated Rich Text and URL fields

Rich Text and URL are now both available as field options when adding a calculated field. If selected, these will render as read-only rich text and URL fields. The calculation must be formatted with the *html* or *url* functions to be correctly escaped.

For example, to create a calculated rich text field to produce this:

This is plain text. **This is in bold.**

Uses this calculation:

```
html(|This is in plain text. This is in bold.|)
```

For a URL, the following are appropriate calculations:

```
url('http://google.com')  
link([A workflow record variable])
```

The *html*, *url*, and *link* functions inform the system that the data is appropriately encoded for use as HTML or URL. If they are not used then the system will (for safety) fully encode the string, and will end with unexpected results.

Administrators may disable access control in report calculations

The `!unsecured` calculation keyword was previously unavailable in report calculations, except by creating a calculated field.

The !unsecured keyword may now be report calculations.

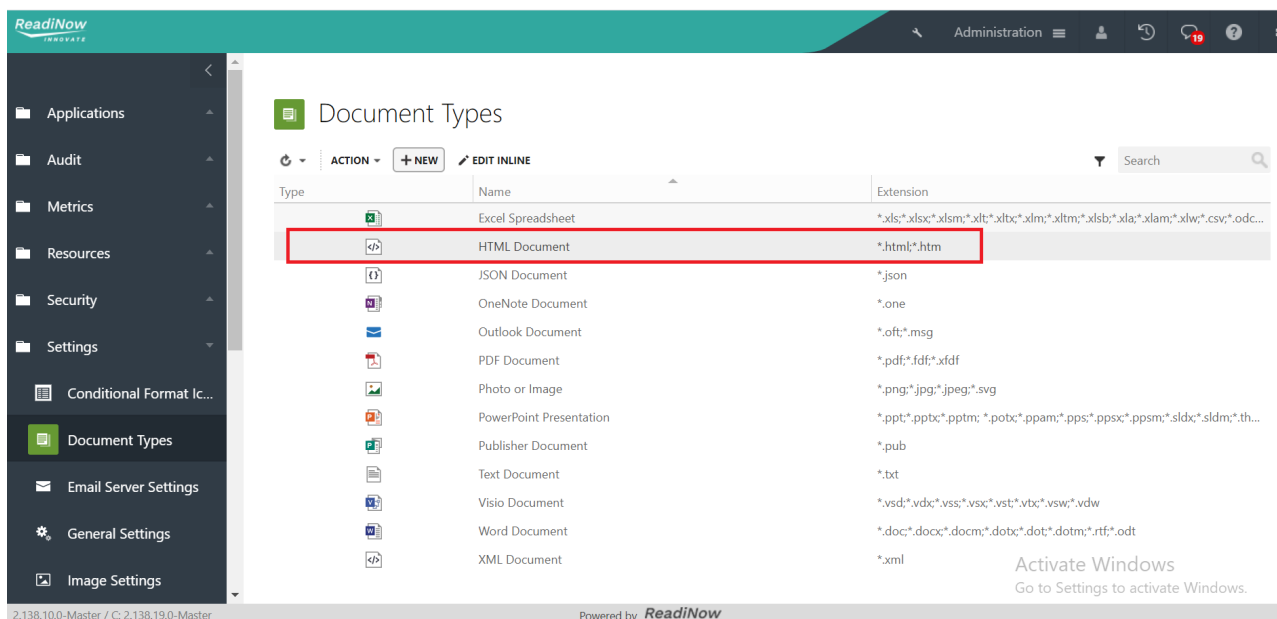
The report must be saved by a security administrator. If a content administrator, who is not a security administrator, subsequently modifies the report then !unsecured will no longer be honored in that report. However, if the user who saved the report ceases to be a security administrator or if their account is deactivated, then the report and !unsecured calculation will still run to work as intended for other users.

Document Generation

Support HTML document templates

Platform now supports the ability to generate the HTML documents.

User can upload documents and create templates with .html/.htm file extensions to be used for document generation. The generation process is similar to plain-text documents. The the default encoding of the calculation macros will be HTML.



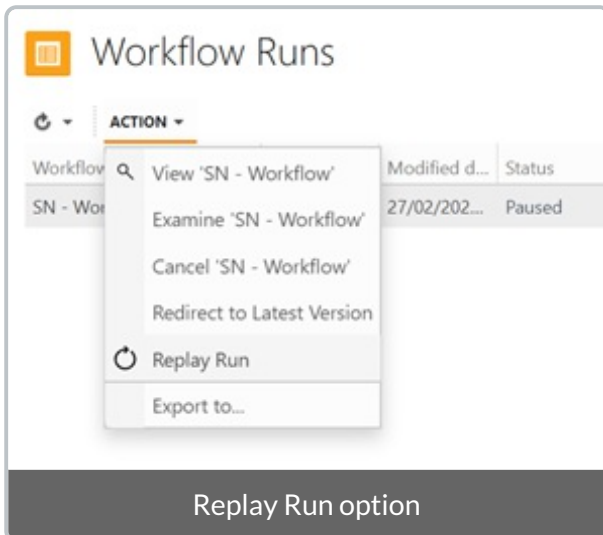
This means, for example, that if an embedded macro results in a string that contains a HTML character such as < > or &, then it will get encoded for HTML (e.g. < > or & respectively)

Note : Generated files are passed through a HTML whitelist sanitizer that removes script tags.

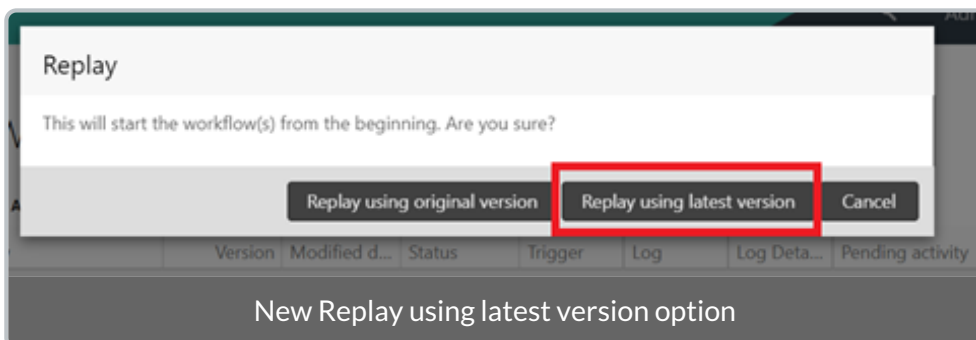
Enhancements

Replay Workflow

In Release 2.136, the *Replay Run* feature was made available which allowed users to replay any Workflow run with the same inputs and context. However, this replay would always use the original version of the Workflow which the run executed.



This feature has been enhanced such that now when replaying a Workflow run, after selecting *Replay Run*, users may choose to replay using the latest version of the workflow or staying on the original version.



Bug Fixes

- Configuration changes : Log entries are now created when an entity is imported via platform configure commands
- Reports : Workflow button on a report no longer temporarily disabled when returning to that report

- Report Builder : Adding additional columns to the right of a report will now always correctly render all columns on the right of the chart without requiring a scroll action to redraw
- Survey : Clicking Next/Previous when answering a Survey will now load the page starting from the top
- Workflow Builder : Pressing 'Enter' when editing a response in a User Action activity no longer deletes the response

Product Documentation

Changes have been made to this product documentation.

- You can now bookmark pages.
- You can now use Google and other search engines to find content.

The following articles have been added or updated recently:

- [Link Function](#)
- [Relationships](#)
- [Security Relationships](#)
- [Text Templates](#)